



INNOVA

COLLECTION

Decorative Round & Square
Channel Rod System
Manual | Coded | Motorized

TEXTILE
TRIMMINGS

Your Drapery Hardware Specialist

INNOVA Round & Square Collection

38mm (1-1/2") Round and 36mm (1-1/2") Square Channel Rod System.

Operates as a Hand drawn, Cord drawn or Motorized system.

Supports both Pleated and Snap-On drapery styles with one-way or center draw capability.

Extruded aluminum rods come in 8ft, 10ft, 16ft and 20ft lengths, can be custom cut to order.

Choose from variety of stock finishes, custom painting available.

Finials for Square Innova Rods



Square End Cap / SI3400
Size: 7/8" x 1 5/8"



Square Glass Finial / SI3403
Size: 2 7/8" x 1 1/2"

Brackets for Square Innova Rods



Decorative Wall Bracket / SI4300
Return = 4 3/8" | Base = 1" x 2 5/8"



Decorative Wall Double Bracket / SI4400
Returns = 3 5/8" / 7 5/8" | Base = 2 1/4" x 2 5/8"

Finials for Round Innova Rods



End Cap / IC3400
Size: 1 1/8" x 1 3/4"



Connaught Finial / IC3402
Size: 3 1/4" x 2 7/8"



Trafalgar Finial / IC3407
Size: 2 7/8" x 3 3/4"



Glass Globe Finial / IC3408
Size: 3 3/4" x 2 5/8"



Baillie Finial / IC3404
Size: 3 3/4" x 2 5/8"
Not available in .90 Mirror Chrome



Dunbar Finial / IC3405
Size: 2 3/4" x 2"



Crystal Finial / IC3415
Size: 3 3/4" x 2 7/8"

Brackets for Round Innova Rods



Decorative Wall Bracket / IC4310
Return = 4 3/8" | Base Diam = 2 1/4"



Decorative Wall Double Bracket / IC4410
Returns = 3 1/2" / 7 1/2" | Base Diam = 3"

Brackets for use with both Round & Square Innova Rods



Economy Wall Bracket / ML7300
Return = 3 1/2" | Base = 7/8" x 2"



Ceiling Bracket / ML7215
Clearance = 1 5/8"
Base Diam = 1 7/8"
Not available in .90 Mirror Chrome



Economy Wall Double Bracket / ML7400
Returns = 3 1/2" / 7 5/8" | Base = 1" x 2 1/2"



Ceiling Clip / ML7250
Total Length = 2"



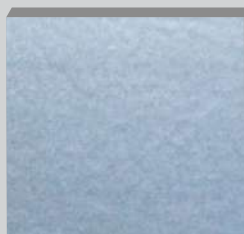
Extended Wall Double Bracket / ML7440
Returns = 3 1/8" / 8 5/8" | Base = 1" x 2 1/2"



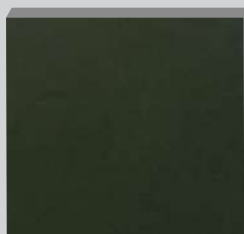
Custom Suspension Bracket / HT3050
Available in:
.25 White | .59 Black
Custom painting available, can be custom cut to order.
Not available in:
.88 Brushed Stainless
.90 Mirror Chrome



.47 Espresso



.50 Silver Cloud



.59 Black



.62 Gun Metal



.64 Vintage Gold



.65 Vintage Copper



This Innova system can be Motorized with Voice / App control and integrated with Home Automation.



HOME MOTION BY



Components for Pinch PLeat

Master Carrier



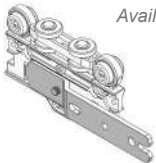
Underlap / ACS2014
Available in: .25 White | .59 Black



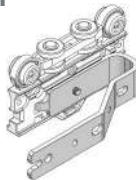
Overlap / ACS2013

Ball Bearing Master Carrier

Available in: .25 White



Underlap / ACS2016



Overlap / ACS2015

Ball Bearing Carrier

Slim Ball Bearing Carrier / ACS2250

5/8" Wide, 3/4" pin drop

Available in: .25 White | .59 Black | .01 Brown | .60 Aluminum



Mini Ball Bearing Carrier / ACS2245

1/2" Wide, 3/4" pin drop

For use when smaller stackback is required

Available in: .25 White | .59 Black

Decorative Fling Rod / ML1330

Components for Snap-On

Snap-On Master Carrier

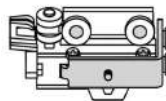


Underlap / ACS2036
Available in: .25 White | .59 Black

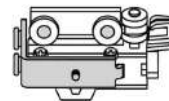


Overlap / ACS2035

Snap-On Butt Master Carrier



Left Hand / ACS2046



Right Hand / ACS2045

Available in: .25 White | .59 Black

Snap-On Tape

4-1/4" on centre / ACS2945

Available in: .25 White | .59 Black | .98 Clear

6" on centre / ACS2960

Available in: .25 White | .98 Clear

7-1/2" on centre / ACS2975.25 White

8-1/2" on centre / ACS2985.25 White

10" on centre / ACS2910.25 White



Snap-On Wheeled Carrier



3-1/8" Spacing (40%)
/ ACS2804N

2-5/8" Spacing (60%)
/ ACS2806N

2-3/8" Spacing (80%)
/ ACS2808N

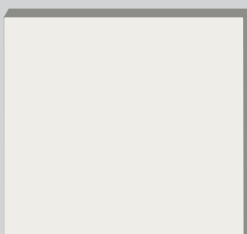
2-1/8" Spacing (100%)
/ ACS2810N

1-7/8" Spacing (120%)
/ ACS2812N

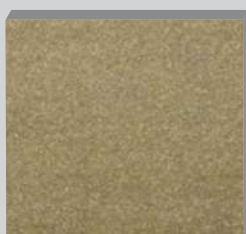
Available in: .25 White | .59 Black



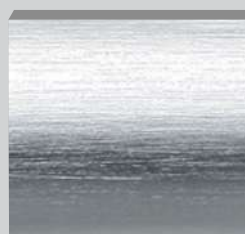
.66 Cream



.71 Cloud White



.84 Gold



.88 Brushed Stainless



.90 Mirror Chrome



Innova Sample Case

INNOVA

COLLECTION

